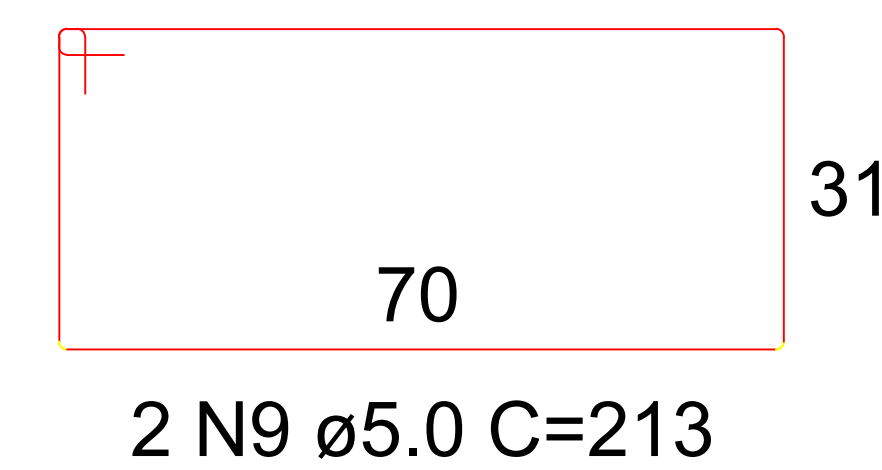
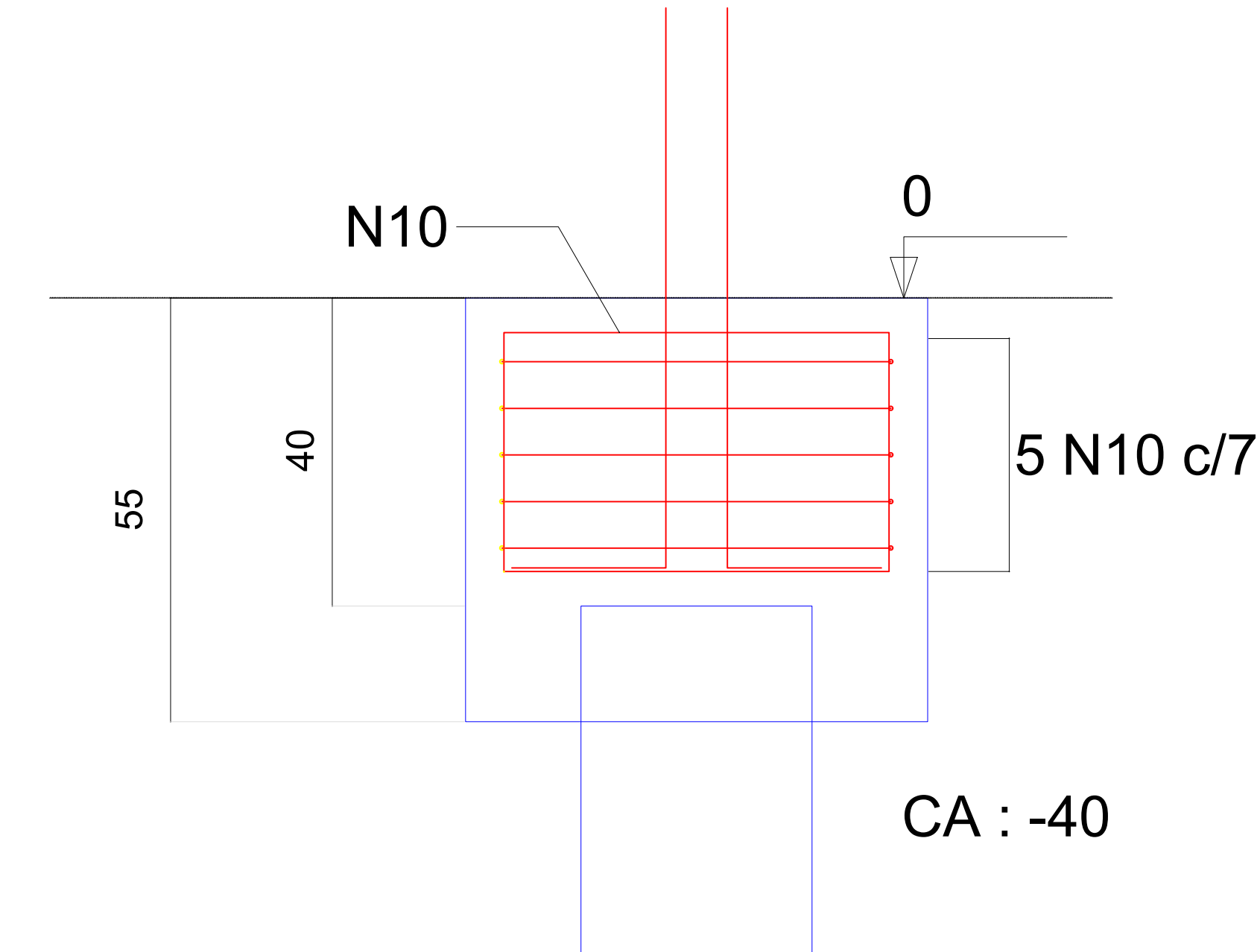
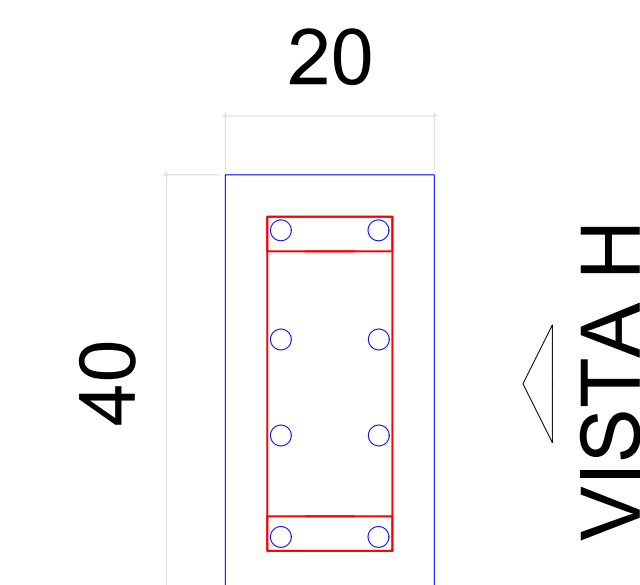


P1=P2=P3=P4=P5=P6=P7=P8=P9=P10=  
=P11=P12=P13=P14=P15=P16

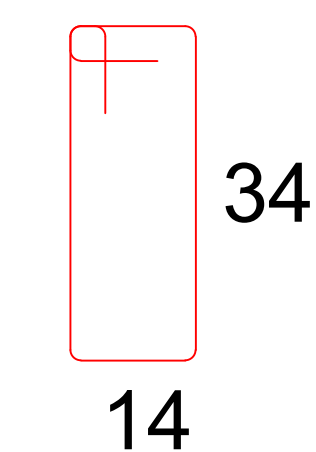
## VISTA B



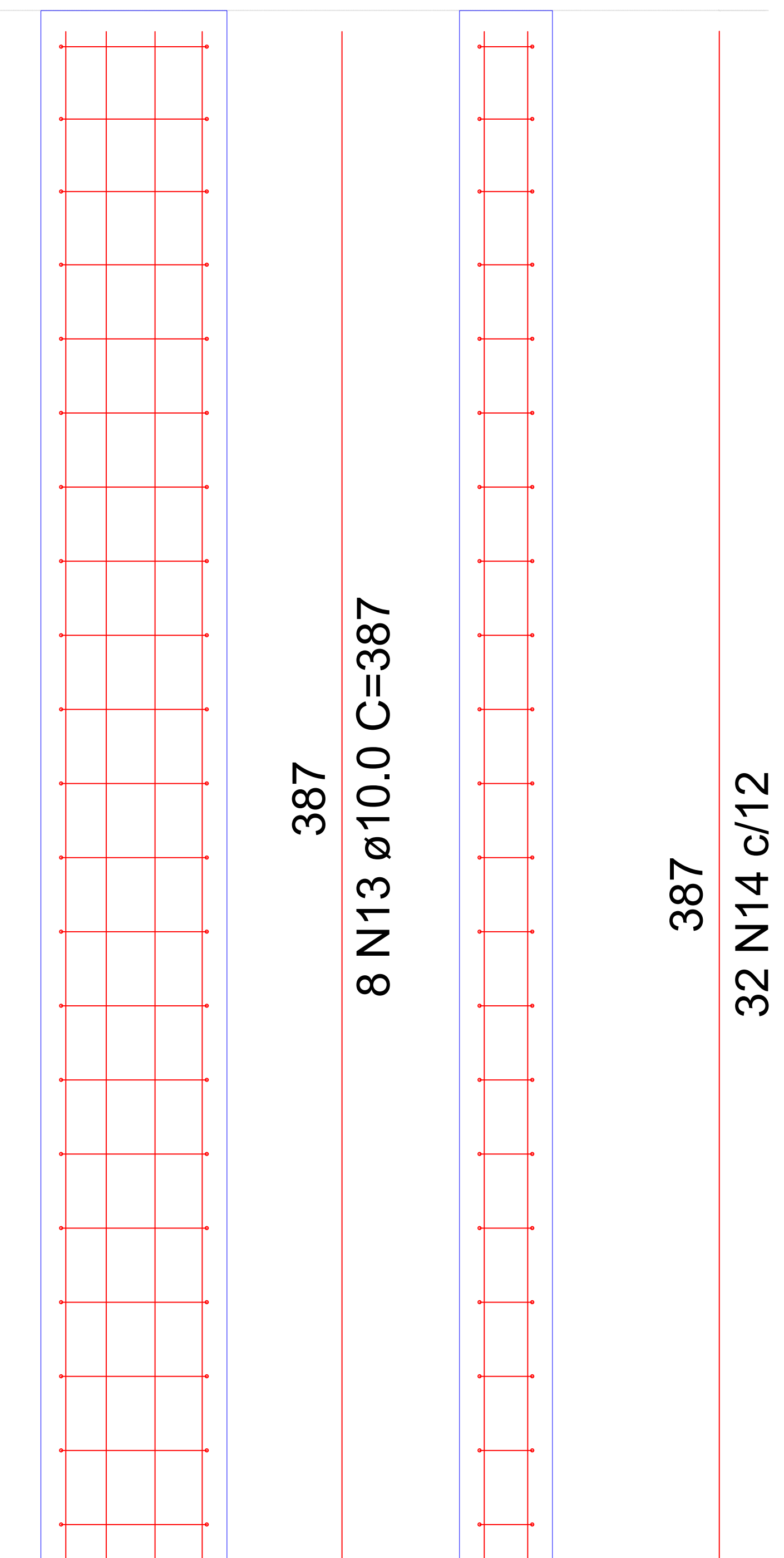
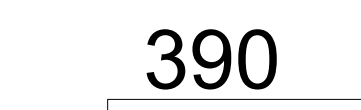
SEÇÃO  
ESC 1:20



VISTA B



32 N14 ø5.0 C=108



387

387  
8 N13 ø10.0 C=387

387

32 N14 c/12

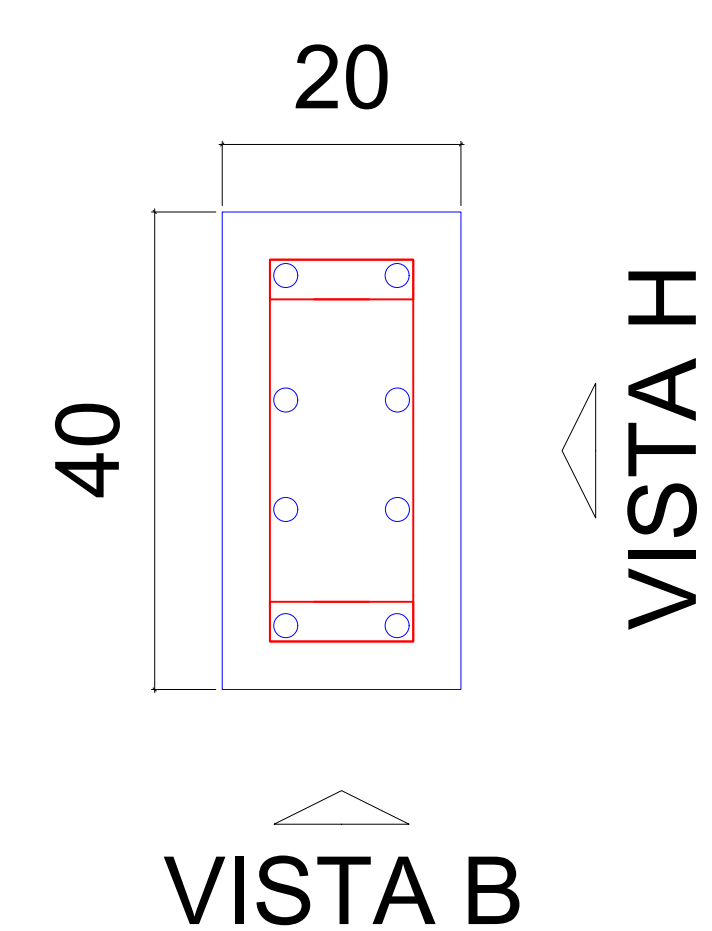
0

ESCALA 1:50

## RESUMO DO AÇO

AÇO	DIAM (mm)	C.TOTAL (m)	PESO TOTAL (kg)
CA50	8.0 10.0	676 1021.12	CA50 1793,38 CA60 368,62
CA60	5.0	1195.52	

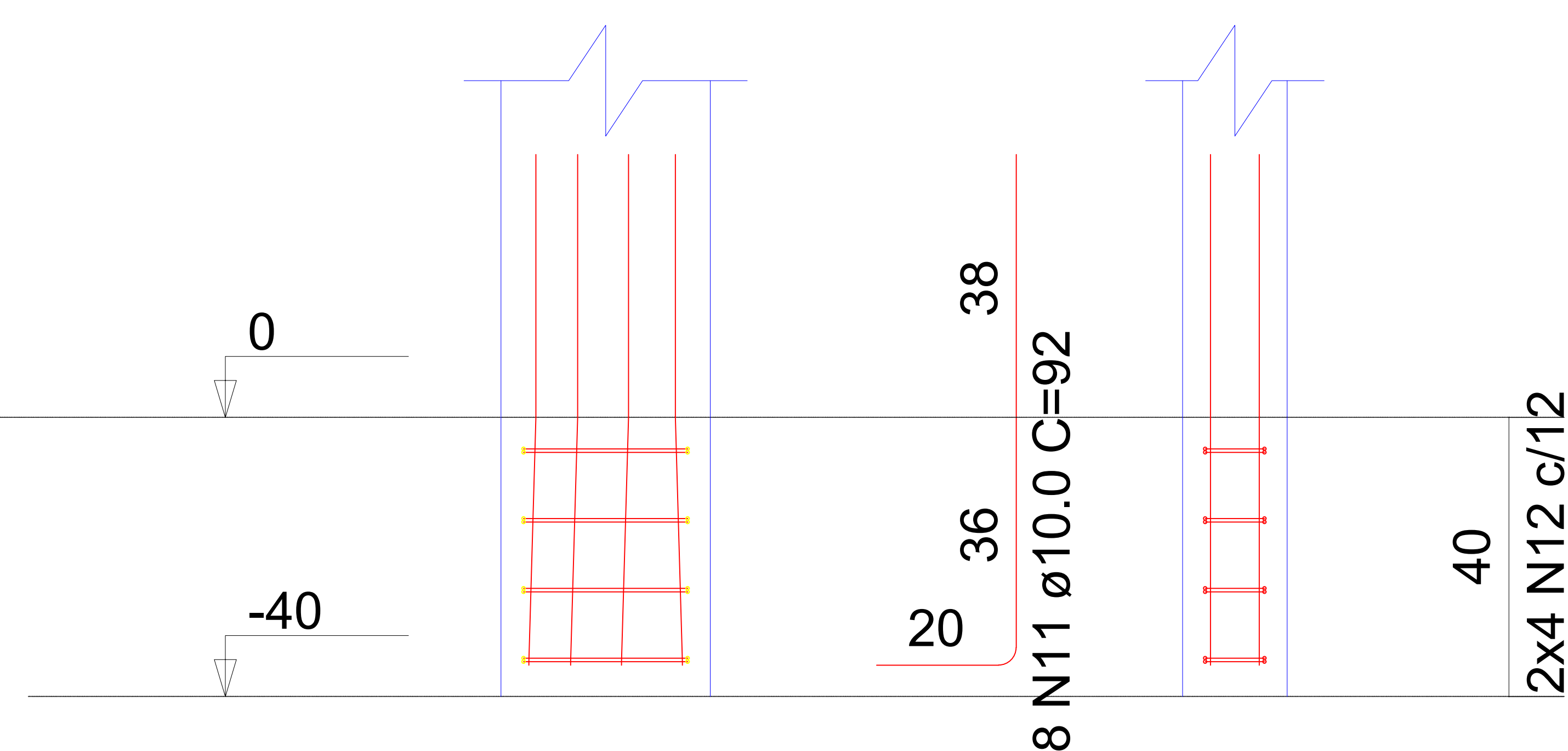
SEÇÃO  
ESC 1:20



34  
14

2x4 N12 ø5.0 C=74

### VISTA B



ESCALA 1:50